



# GMT MONTHLY MEMBERSHIP PROGRESS REPORT

Results as of: 8/31/2019

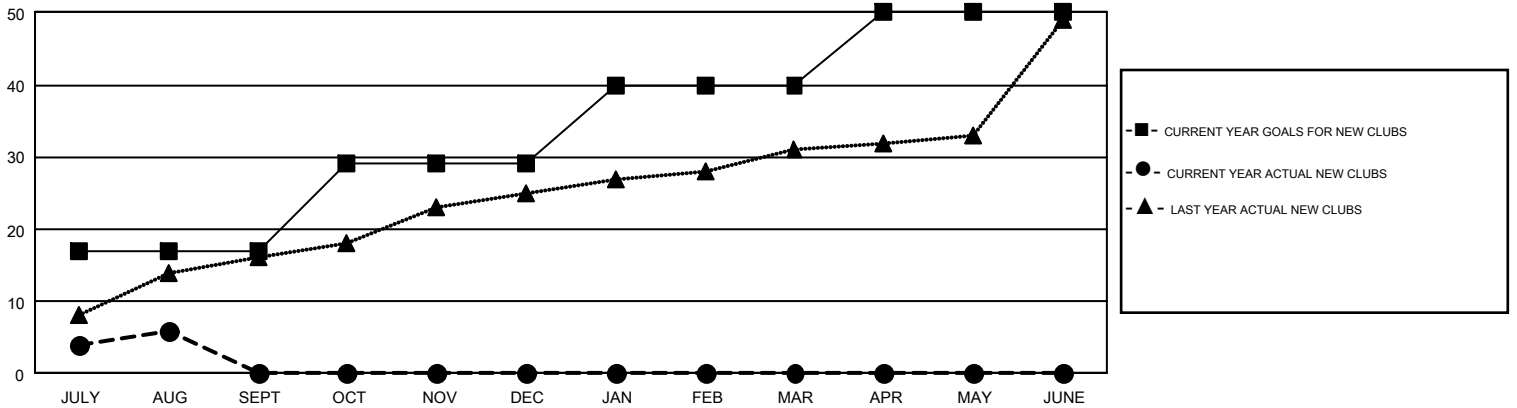
## GMT Constitutional Area 6, Group H

GMT: OPEN

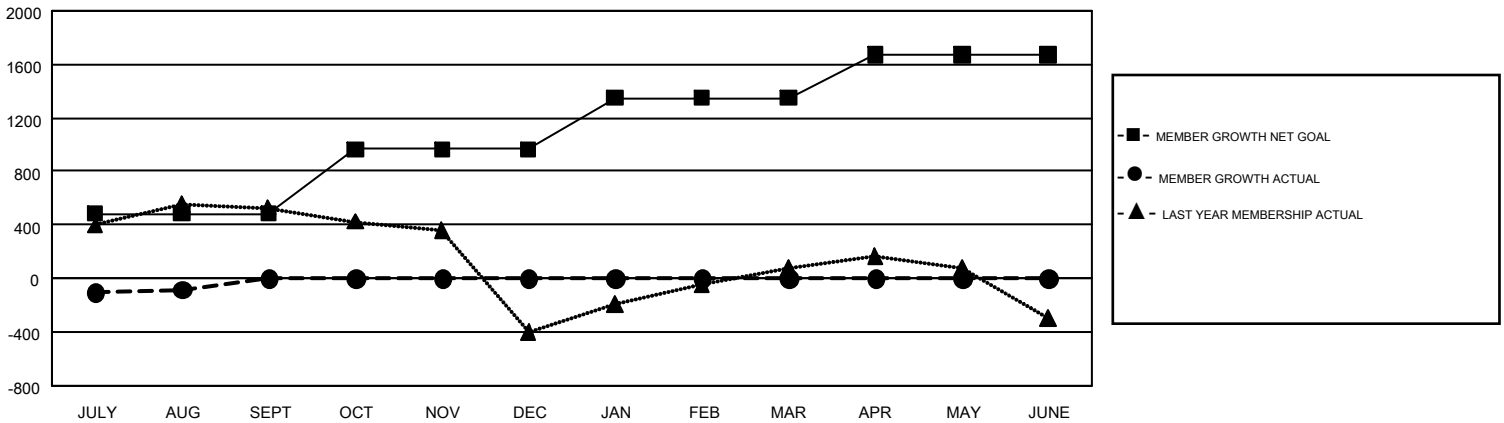
REPORT DOES NOT INCLUDE CLUBS IN UNDISTRICTED AREAS.

Clubs				Members			
RESULTS FOR 2019-2020				RESULTS FOR 2019-2020			
QUARTER	NEW CLUB GOAL	NEW CLUBS	DROPPED CLUBS	QUARTER	MEMBER GROWTH NET GOAL	MEMBER GROWTH ACTUAL	DROPPED MEMBERS ACTUAL (including transfers)
JULY/AUG/SEPT	17	6	4	JULY/AUG/SEPT	485	538	561
OCT/NOV/DEC	12	0	0	OCT/NOV/DEC	480	0	0
JAN/FEB/MAR	11	0	0	JAN/FEB/MAR	385	0	0
APR/MAY/JUNE	10	0	0	APR/MAY/JUNE	325	0	0

GOALS AND ACTUAL NEW CLUBS CUMULATIVE



GOALS AND ACTUAL MEMBERS CUMULATIVE



DROPPED CLUBS: 4	116 CLUBS OF 669 ADDED 1 OR MORE NEW MEMBERS	<u>GENDER DISTRIBUTION</u>		
		MALE	19,444 (81.76%)	
<u>DROPPED MEMBERS</u>		FEMALE	4,339 (18.24%)	
DECEASED	21	TOTAL FAMILY UNIT MEMBERS		7,575
CLUB CANCELLED	45	FAMILY MEMBERS PAYING HALF DUES		3,963
OTHER	495	<a href="#">CLICK HERE FOR CUMULATIVE MEMBERSHIP DATA</a>		
TOTAL	561			